

## OPERATION MANUAL

### BT-VTBF





# Beton Trowel nv

---

Use this guide along with the parts lists attached to locate and identify components of your trowel. When ordering replacement parts, be sure to provide the model number and serial number from the trowel.

## Copyright

© Copyright 2011 by Beton Trowel.

## Contact

BETON TROWEL

Nijverheidsstraat 11

1840 Londerzeel

BELGIUM

[www.betontrowel.com](http://www.betontrowel.com)

## 1 GENERAL SAFETY-ASPECTS

All BT equipment have been tested in accordance with the strict international safety standards.

This section contains general advice and apply to several machines mentioned in this paragraph.

- Ensure that you are qualified (familiar with the contents of this manual), to operate and carry out light maintenance-work to the machine when you are operating the machine for the first time.
- Wear safety shoes with extra protection (steel caps and anti-slip soles)
- Wear a safety helmet, safety glasses, working gloves, which do not conduct electricity and protective clothing.
- Ensure, that all symbols on the machine, can always be clearly read.
- Do not leave any tools or parts lying around on the work floor, as this can cause accidents.
- Watch where you are going, the ground can be slippery.
- Take care that you do not injure yourself on objects, such as scaffolding and reinforcement materials, which can be found directly or indirectly in the working area.
- Be careful when lifting and carrying the Bullfloat. Do not bend forwards when picking up the apparatus, but bend your knees. Ensure that the working area is within your reach, sothat you do not have to bend forward.
- When cleaning the machine, ensure that no water or cleaning detergents get into the motorhousing.
- When the machine is not being used for longer periods of time, then it must be stored in a dry and clean area.
- Do not only pay attention to your own safety, but also to that of your colleagues.

Regular maintenance of the machine promotes safe operation.

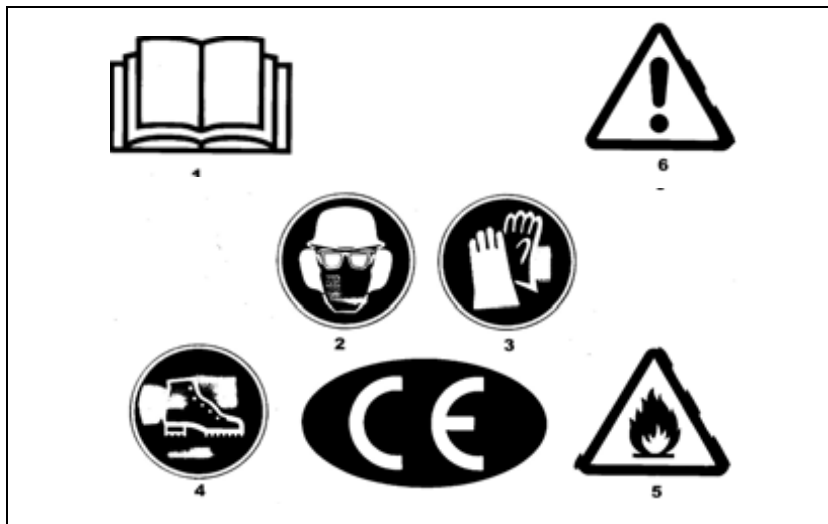
- Do not use the Bullfloat with petrol-engine indoors or in poorly ventilated places, such as pits etc.
- Make sure that there is sufficient ventilation in spaces which are surrounded by walls. Never inhale exhaust gasses, they can damage your health and that of your colleagues.
- To avoid getting an electric shock, do not touch the high-tension cable or spark plug cap while the engine is running.
- Check for fuel leaks before running the machine.
- Do wear working-gloves, safety glasses and protecting clothing during refueling.
- Make sure that there is sufficient ventilation during refueling.
- Refueling of fuel is only allowed after the engine has been cooled off sufficiently.
- Refueling of fuel , while the engine is hot, might lead to a very dangerous situation.

***It is strictly forbidden to refuel :***

- \* in the direct vicinity of open fire or other flammable materials,
- \* while smoking cigarettes etc.
- \* in explosion endangered spaces.

## 2 EXPLANATION OF THE USED SAFETY SYMBOLS

BT-VTBF



- 1 Please read the instructionbook
- 2 Safety glasses, safety helmet and ear protection compulsory.
- 3 **Working gloves compulsory. (vibration Isolating work Glove with GELFÔM)**
- 4 Safety shoes with extra protection compulsory.
- 5 Before opening the motorhousing remove the plug from the mains/  
Inflammable material
- 6 Dangerous electrical voltage/ Careful, DANGER!
- 7 Careful, DANGER!!

**TIP:** If the safety aspects are not clear to you, then please contact the manufacturer for further information: Beton Trowel. Telephone: + 32 52 31.53.50; Telefax: + 32 52.30.37.39

### 3 TECHNICAL DATA BT-VTBF

	<b>BT-VTBF (4-stroke petrol engine)</b>
Voltage	-----
Capacity	0,81 Kw (1,1 Hp)
Revolutions	9.000 rpm
Centr. Force	1800 Newton
Mass	2.0m 15 kg
Fuel	Unleaded petrol (95)
Sound press. level ISO6081	80dB (A)
**Value of acceleration	3,89m/s <sup>2</sup>
Comfort. exposure	3,3hr Max 13,2hr a day
Execution	Portable

\*\*The weighted effective value of acceleration, determined according to ISO 5349

### 4 OPERATION INSTRUCTIONS

This chapter describes the use of the complete range of bullfloats.

TIP:For the location and description of the bullfloat's parts, which are mentioned in the text, we refer to the illustration figure 1 on the backside of the cover.

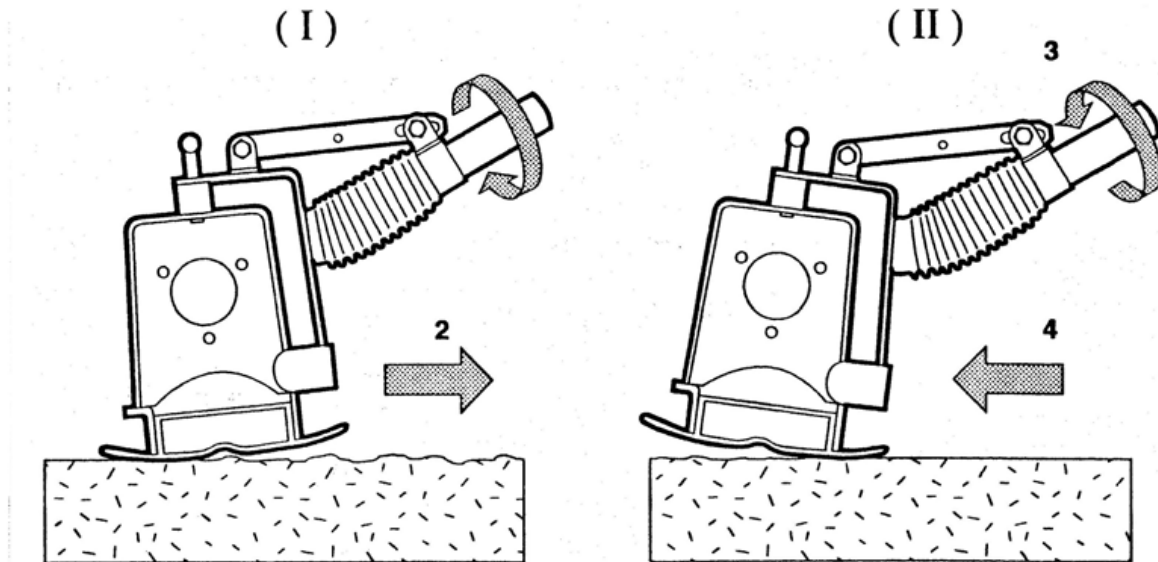
#### ***HOW TO ASSEMBLE THE BULLFLOAT.***

When delivered the bullfloat is not ready for use. You only have to carry out the following procedures.

- Connect the switch ( an ON/OFF-switch, an electronic speed regulator, or a gashrottle), to the operating handle by means of the bracket and the butterfly nut.Now lock the bracket by tightening the butterfly nut.

- Stick the operating handle into the shaft of the motorunit-frame. Make sure that the operating handle is locked in the proper way.

## HOW TO ADJUST THE TROWEL BLADE ANGLE.



### Adjusting the blade pitch

Use position (1) when smoothing normal freshly poured concrete.

These numbers are position numbers and they correspond to the numbers in the parts list of the corresponding figures.

**CAREFUL:** Read the safety aspects and instructions before you switch on the apparatus.

**CAREFUL:** Prevent the bullfloat of sinking into the concrete. After the motor has been switched on, immediately move the bullfloat backwards.

**TIP:** Before the bullfloat is brought into action, first compact the freshly poured concrete floor with a poker-vibrator while at the same time adjust the height of the floor by means of a laser device.

**TIP:** Pour concrete lanes of approx. 3 m. wide and approx. 15 m. long. You can finish this surface in one pass without any problem.

## 5 OPERATION OF THE BULLFLOAT

### WARNINGS

- Do not run the engine in a closed area. Exhaust gas contains carbon monoxide, an odorless and deadly poison.
- Gasoline is extremely flammable and can be explosive under certain conditions.
- Do not smoke. Make sure the area is well ventilated and free from any source of flame or sparks.
- Stop engine and allow the engine to cool off before refueling.
- Do not fill the tank so the fuel level rises into the filler neck or level surface of the level gauge. If the tank is overfilled, heat may cause the fuel to expand and overflow through the vents in the tankcap. Wipe off any spilled gasoline immediately.
- Keep the engine at least 1 mtr. away from buildings, obstructions and other burnable objects. To avoid getting an electric shock, do not touch the spark plug or spark plug lead during engine running. To avoid a serious burn, do not touch a hot engine muffler. Before you service or remove parts stop engine and allow the engine to cool.
- Always remove the spark plug lead from spark plug when servicing the engine to prevent accidental starting.

Read the instruction manual of the petrol engine.

### MAINTENANCE AND REPAIR.

Although the bullfloat has few moving parts, regular maintenance promotes a long and trouble-free life.

**WARNING!:** Never use a high pressure cleaner to clean the bullfloat with an electrical- or petrol drive unit.

#### *LUBRICATING THE BLADE PITCH CONTROL.*

Lubricate the blade pitch control , after a long periode of storage , or at least twice a year with Texaco Multifak EP 2.



## *CLEANING AND SERVICING OF THE PETROL ENGINE.*

In order to achieve a maximum cooling effect the ventilation openings must stay free from dirt or grease. Check them at the end of each working day.

If necessary, clean them with a brush or a damp cloth.

For a proper functioning of the carburetor's control mechanism, it is necessary to check the carburetor for concrete or dirt, each time after use. If necessary clean the control mechanism with a brush or a damp cloth.

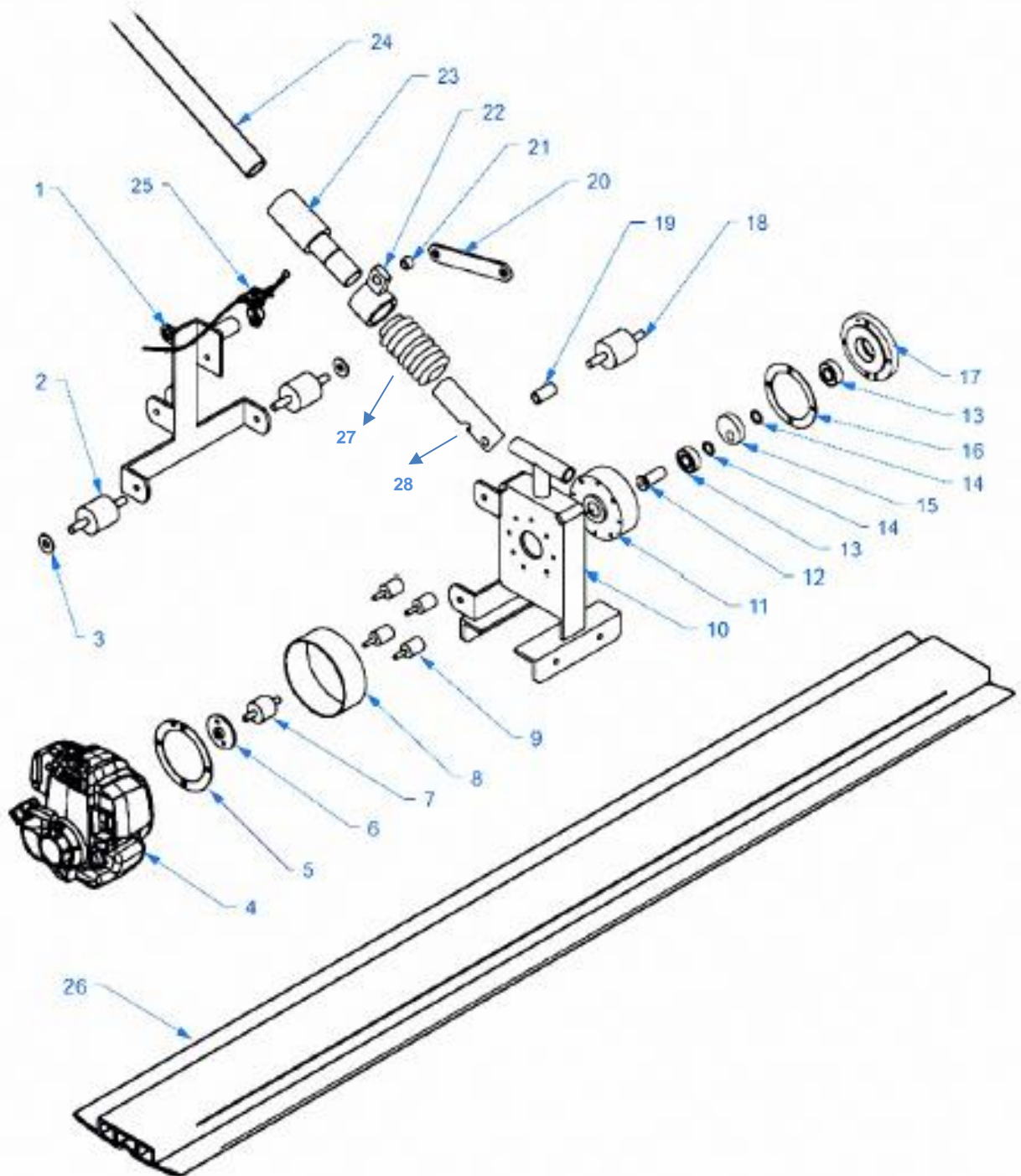
## **6 WARRANTY**

**Your new BT-VTBF is warranted to the original purchaser for a period of one-year ( 12 months ) from the original date of purchase.**

The BT warranty is against defects in design, materials and workmanship.

The following are not covered under the BT warranty:

- Damage caused by abuse, misuse, dropping or other similar damage caused by or as a result of failure to follow assembly, operation or user maintenance instruction.
  - Alterations, additions or repairs carried out by persons other than BT Products or their recognized agents.
  - The ventilation slots are not cleaned regularly,
  - Unqualified personnel (not familiar with the contents of this operation manual) have assembled or dismantled the unit.
  - It has been stored in a damp environment.
  - It has been cleaned with a high pressure cleaner or by water jet under high pressure.



**BTVTBF Vibratamp Bullfoot Parts List**

Item	Part No	Description	Qty
1	1406100	Assembly Bracket	1
2	1406001	Rubber Buffer	2
3	1402004	Washer	2
4	HONGX25NT	GX25 Honda Engine	1
5	1402001	Spacer	1
6	1402009	Motor Adaptor	1
7	1402008	Rubber Buffer	1
8	1402011	Protection Cover	1
9	1402007	Rubber Buffer	4
10	1406300	Motor Assy Bracket	1
11	1402002	Housing	1
12	1402006	Shaft	1
13	6202Z	Bearing	2
14	1402004	Washer	2
15	1402005	Eccentric Weight	1
16	1402001	Spacer	1
17	1402003	Front Shield	1
18	1406001	Rubber Buffer	1
19	1405003	Bushing	1
20	1405001	Motor Bracket	1
21	1405002	Short Bushing	1
22	1405100	Clamp	1
23	1405004	Handle Fixture	1
24	BT00055	Sanp Handle	3
25	1406003	Throttle Assy	1
26		Blade	1
	(A)	BTVT2000 2m blade	
	(B)	BTVT2500 2.5m blade	
	(C)	BTVT3000 3m blade	
27	1405007	Rubber Protection Sleeve	1
28	1405005	Pitch Control	1

## EC-Declaration

EC-Declaration of agreement for machinery  
(Directive 98/37/EC, Annexe II, under A)

Manufacturer: Beton Trowel NV  
Address: Nijverheidsstraat 11, 1840 Londerzeel, Belgium

Hereby declares that:

The bullfloat type : BT - VTBF

complies with the regulations for the Machine Directive (No. 98/37/EC, as  
lastly modified).

Complies with the following harmonized standards:  
NEN – EN 292 – 1 (1994), NEN – EN 292 – 2 (1996), NEN – EN 60335 – 1 (1995),  
NEN – EN 55014 (1994), NEN – EN 60204-1 (1996), NEN – EN 50144 2 11 (1996)



Name: Chris Livingston  
Function: Director